
3" WPS® -CP Constant Pressure System

3" WPS® Pumps

3" WPS® and 3" WPS®-CP 50/60Hz

WP/JVG/2.0/15.11.09



General Data

3"WPS® and 3"WPS®-CP submersible pumps	3
3"WPS®-CP	3
3"WPS®	4
Pump and motor range	4
Pipe connection	4
Pump identification code	4
Pumped liquids	4

Features and Benefits

Dry-running protection	5
High pump efficiency and Wear resistance	5
Excellent starting capabilities	5
Overvoltage and undervoltage protection	5
Overload protection	6
Protection against lightning	6
Overtemperature protection	6
Reliability	6
Variable speed	6
Auxiliary contact for Second set-pressure or Remote on/off switch	6
Installation	7
Service	7

Performance Curve and Technical Data

3"WPS® 5 and 3"WPS®-CP 5	8
3"WPS® 8 and 3"WPS®-CP 8	10
3"WPS® 13 and 3"WPS®-CP 13	12
3"WPS® 25 and 3"WPS®-CP 25	14

Material specification 16

Cable selection

Supply cable to the controller	17
Submersible drop cable to the motor	17

Accessories

Submersible drop cable to the motor (drinking water quality)	18
Submersible cable joint kit	18
Straining Wire	18
Wire clamps	19
Filters	19
Cooling Shrouds	19

Notes 21

3" WPS® and 3" WPS®-CP pumps are suitable for both continuous and intermittent operation for a variety of applications:

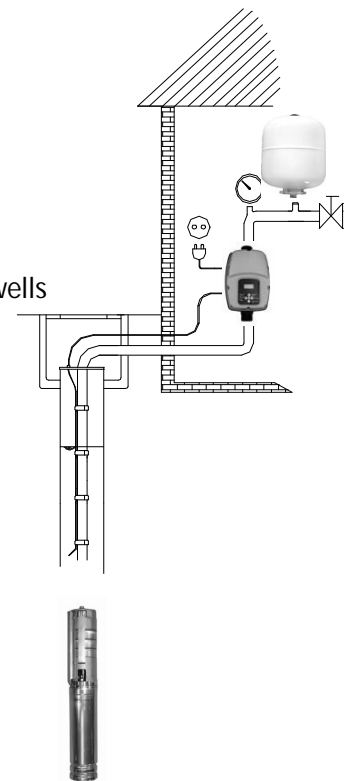
- Domestic water supply
- Small waterworks
- Irrigation
- Tank applications
- Pressure boosting
- Heating pumps
- Sampling of monitoring wells

Note: For other applications, please contact Well Pumps.

3" WPS®-CP

3" WPS®-CP pumps offer the following features:

- Pump entirely made out of stainless steel and fits in 3" or larger drilled wells
- Constant pressure with two set pressures possible
- Capacity from 0.5 to 30 GPM (0,2 to 7 m³/h) and a maximum head of 650 feet (190m)
- Motor rating up to 2 HP (1,5 kW), 140Hz
- Single phase supply to the controller
- Incorporated jam free check valve
- Dry-running protection
- High efficiency of pump and motor
- Excellent resistance to wear
- Soft start
- Overvoltage and undervoltage protection
- Overload protection
- Overtemperature protection.
- Variable speed
- Second set-pressure possible



The 3" WPS®-CP pump is fitted with a three phase 230V Well Pumps motor. The 3" WPS®-CP controller needs a single-phase supply and transforms it to a three-phase current to the motor. The controller is fitted with a frequency drive and performs a constant pressure of the flow through a variable speed of the pump. As a consequence, the pump can be set to operate in any duty point in the range between the pump min. and max. performance curves.

In case of a pump fault, an alarm will be indicated on the LCD screen of the 3" WPS®-CP controller.

The 3" WPS®-CP pump is sold as a kit and consists of the following elements:

- A 3" submersible pump WPS® entirely made of stainless steel.
- A WPS® high speed submersible motor able to run at variable frequencies up to 140Hz.
- A WPS®-CP constant pressure controller including a variable speed drive, a flow detection and a pressure sensor.

3" WPS®

3" WPS® pumps offer the following features:

- Pump entirely made out of stainless steel and fits in 3" or larger drilled wells
- Capacity from 0.5 to 30 GPM (0,2 to 7 m³/h) and a maximum head of 650 feet (190m)
- Motor rating up to 2 HP (1,5 kW), 140Hz
- Single phase supply
- Incorporated jam free check valve
- Dry-running protection
- High efficiency of pump and motor
- Excellent resistance to wear
- Soft start
- Overvoltage and undervoltage protection
- Overload protection
- Overtemperature protection
- Internal surge arrester



The 3" WPS® pump is fitted with a 230V Well Pumps motor and by means of the built-in frequency converter it is driven at a constant speed of 8200 RPM, 140Hz. Every time the pump is put on the supply (1-230) , a soft start will be performed.

Pump and motor range

3" WPS® and 3" WPS®-CP pump range consists of four flow models: 5, 8, 13, and 25 GPM. The pump-end is entirely made out of Stainless steel AISI 304.

3" WPS® and 3" WPS®-CP motors are in Stainless steel AISI 304 and available in three motor powers: 0.8 HP, 1.2HP and 2HP.

Pipe connection

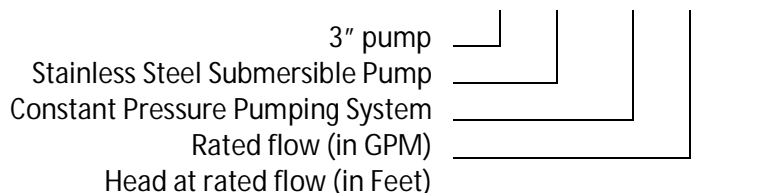
All pump types have a treaded pipe connection NPT 1 ¼".

The 3" WPS®-CP controller has a flow through design. The in- and outlet are NPT 1 ¼" Male.

Pump identification code

Example

3" WPS® - CP 8 - 175



Pumped liquids

3" WPS® and 3" WPS®-CP pumps are designed for pumping thin, clean, non-aggressive and non-explosive liquids, not containing solid particles.

3" WPS® and 3" WPS®-CP pumps are suitable for pumping liquids with a content of sand up to 1.7onces/100 Gallon (50g/m³). A higher content of sand will shorten pump life.

The maximum fluid temperature is 86°F (30 °C). For higher temperatures, please contact Well Pumps.

Features and benefits

Dry-running protection

3"WPS® and 3"WPS®-CP pumps are protected against dry running.

The 3"WPS®-CP controller is equipped with a flow sensor that at all times measures the pumped flow. As soon as this flow drops under a minimum value (Q_{min} is about 0.5GPM/0,1m³/h), the pump will be stopped. Simultaneously, also the absorbed power of the motor is measured. A minimum value of this power ensures cut-out of the pump. Both these measurements ensure in case of lack of water in the borehole, a shutdown of the pump and thus preventing a burnout of the motor.

The 3"WPS® motor includes a built-in controller that is factory-set with a cut-out power and which continuously tracks the absorbed power of the pump. In case of lack of water in the borehole, the absorbed power by the pump will be reduced below the $P_{cut-out}$. Consequently the pump will be stopped and thus preventing a burnout of the motor. The pump will automatically restart after 20 minutes which gives time to the well to recover. In case of a second dry run the pump will wait for 45 minutes before an automatic restart. At the 3rd dry run, the pump will wait for 6 hours and the fourth time for 24 hours. If a 5th dry run occurs, the pump goes in permanent error and has to be reset by taking off the supply from the motor.

High pump efficiency and Wear resistance

The WPS® pumps are entirely made of stainless steel and ensure a high efficiency meaning low energy consumption and therefore low energy costs.

Due to its stainless steel construction in combination with the high performance NBR seals and bearings, the 3"WPS® and 3"WPS®-CP pumps ensure high wear resistance to sand for long product life.

Excellent starting capabilities

The integrated electronic unit of the 3"WPS® and 3"WPS®-CP controller features soft starting. A soft start reduces the starting current and gives the pump a smooth and steady acceleration.

A soft starter minimizes the risk of wear of the pump and prevents overloading of the supply during start-up.

The high starting reliability also applies in case of low voltage supply.

Overvoltage and undervoltage protection

Overvoltage and undervoltage may occur in case of unstable voltage supply.

The integrated protection of all three motor versions prevents damage to the motor in case the voltage moves outside the permissible voltage range.

The 3"WPS®-CP pump will be cut out if voltage falls below 185V or rises above 260V and for the 3"WPS® models below 160V or over 260V. The motor will restart automatically when the voltage is reestablished within the permissible voltage range.

Therefore no extra protection relay is needed.

Overload protection

Exposure of the pump to heavy load causes the current consumption to rise. When the maximum allowed current is exceeded, the pump will be stopped.

Also a locked rotor will automatically be detected and the power supply cut out. Consequently, no extra motor protection is needed.

The 3"WPS® pumps have an extra feature that automatically reduce the speed of the pump when overload occurs. Lower speed means lower power and thus reduction of the absorbed amps. In the case the pump is running at 60Hz and still overloading, the pump will stop and automatically restart after one hour.

Overtemperature protection

The electronic unit of the 3"WPS® and 3"WPS®-CP controller has a built-in temperature sensor. The 3"WPS®-CP controller will cut out the pump when the temperature of the fluid rises over its limit of 130°F (55°C). The error code 'Inverter Error' will be mentioned on the display of the 3"WPS® controller. When the temperature has dropped to 115°F (45°C), the motor is automatically restarted. The 3"WPS® motor will reduce the speed as soon as the internal temperature in the motor reaches 175°F (80°C). This way the absorbed amps and consequently the dissipated heat of the motor will be reduced. In case that at 60Hz the temperature is still not reduced, the pump will shut off and restart automatically after one hour.

Protection against lightning

A surge arrester is built in the motor of the 3"WPS® pumps and is designed to protect the motor from damaging effects of spikes and transients caused by lightning, electrical motor cycling or any other sudden change in electrical power flow on the supply line.

Reliability

The motors have been constructed with a view to high reliability and have the following features:

- Top quality high speed ball bearings.
- An efficient internal food grade oil circulation in the motor transfers the heat away from the rotor, stator and ball bearings and ensures an optimum operating condition for the motor.

Variable speed (only for 3"WPS®-CP units)

The 3"WPS®-CP controller enables continuously variable speed control within the 5740 and 8200 rpm. The pump can operate in any duty point in the range between the 5740 and 8200 rpm performance curves of the pump. Consequently, the pump performance can be adapted to any specific requirement.

On the basis of a required head the speed of the motor is calculated.

Auxiliary contact for Second set-pressure or Remote on/off switch (only for 3"WPS®-CP units)

The 3"WPS-CP controller is standard equipped with an auxiliary contact that can be activated by changing a specific parameter in the programming of the 3"WPS®-CP controller. The auxiliary contact can be used as a remote on/off switch (f.e. only run the pump when the irrigation is running, extra protection of the pump against dry running in a tank or cistern with a float switch, ...) or to create a second constant pressure level (f.e. higher pressure level when the irrigation system runs, lower pressure level to back-wash a water treatment system, ...)

Installation

The 3"WPS® and 3"WPS®-CP pump may be installed vertically, horizontally or in any position in between.

The 3"WPS®-CP controller can be placed in any position.

Note: The pump must not fall below the horizontal level in relation to the motor.

The following features ensure simple and easy installation of 3"WPS® and 3"WPS®-CP pumps:

- Discharge NPT 1 ¼"F.
- Built-in, jam-free non-return valve,
- Low weight ensuring user-friendly handling,
- Installation in 3" or larger boreholes,
- No extra on/off switch or motor starter is necessary.
- Available with one length cable with a motor plug (from 5,75ft up to 200ft).

Only for 3"WPS®-CP pumping systems:

- The 3"WPS®-CP controller has a flow through design. The pumped water ensures the cooling of the electronics. The connections on the controller are NPT 1 ¼"M.
- Optional, a very install friendly mounting kit is available.

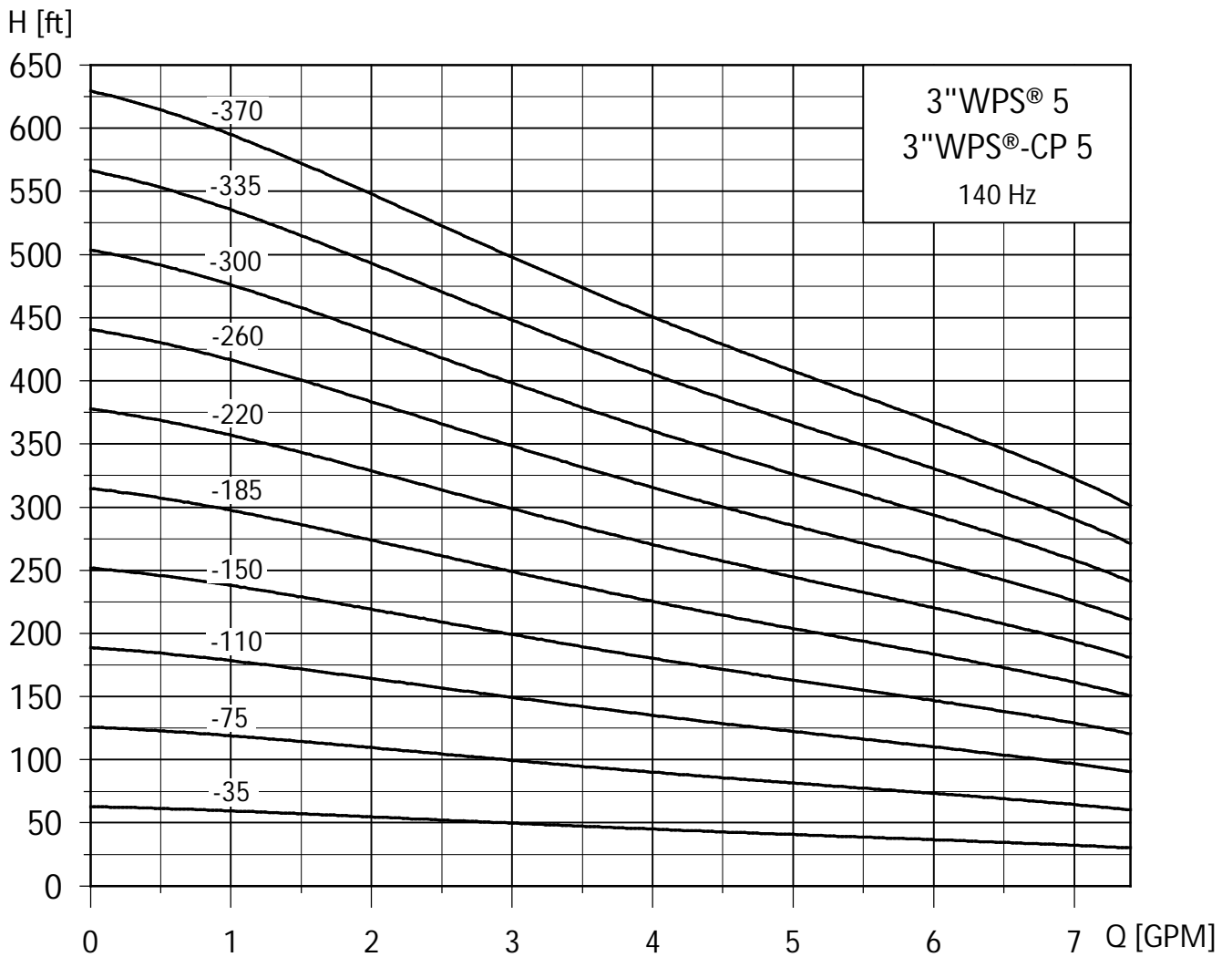
For horizontal installation a flow sleeve is recommended in order to

- Ensure sufficient flow velocity past the motor and thus provide sufficient cooling,
- Prevent motor and electronic unit from being buried in sand or mud.

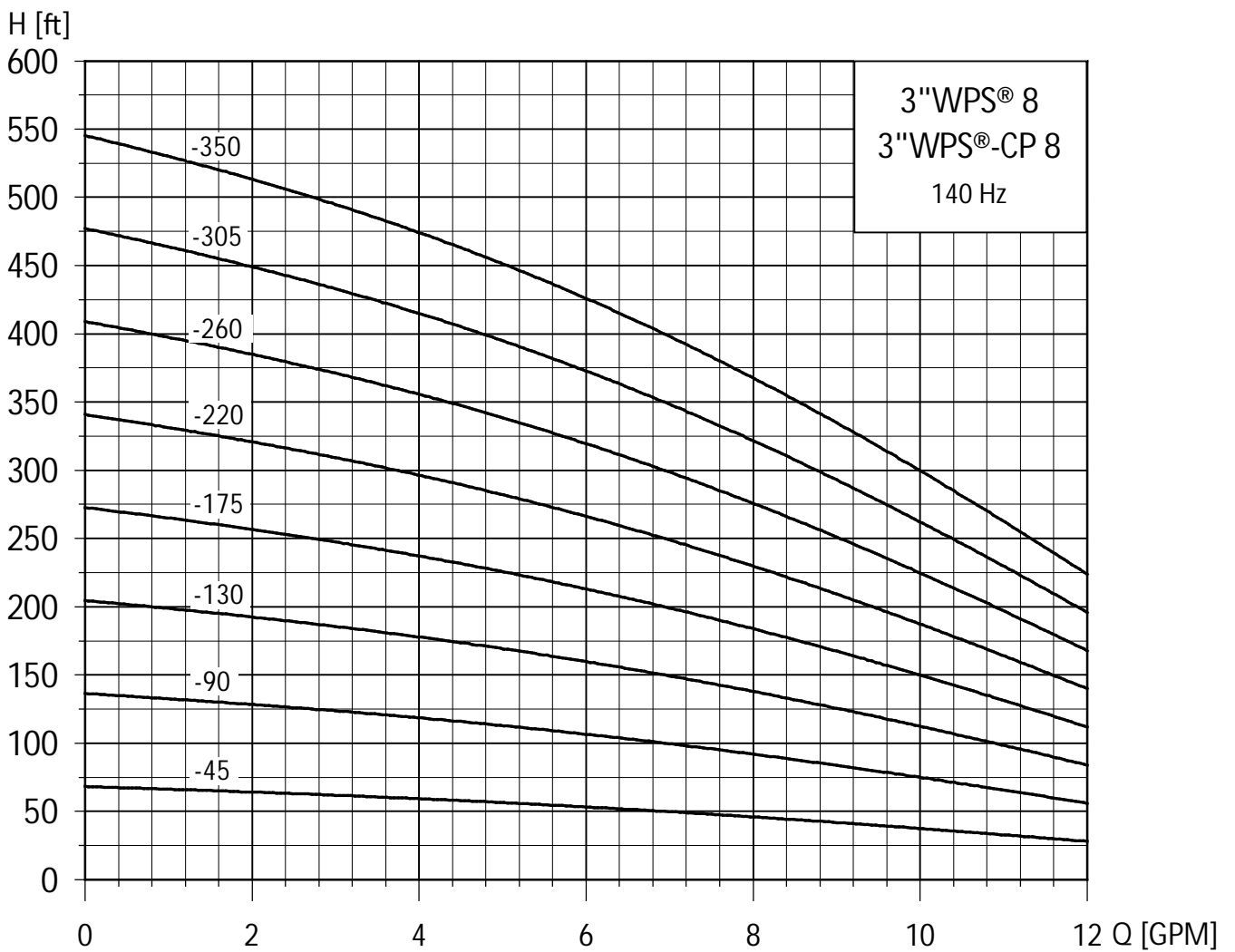
Service

The pump and motor are very easy to maintain and repair. The modular pump and motor design facilitates installation and service. The cable and the plug are fitted to the pump with screws which enables replacement.

Performance Curves 3"WPS® 5, 3"WPS®-CP 5



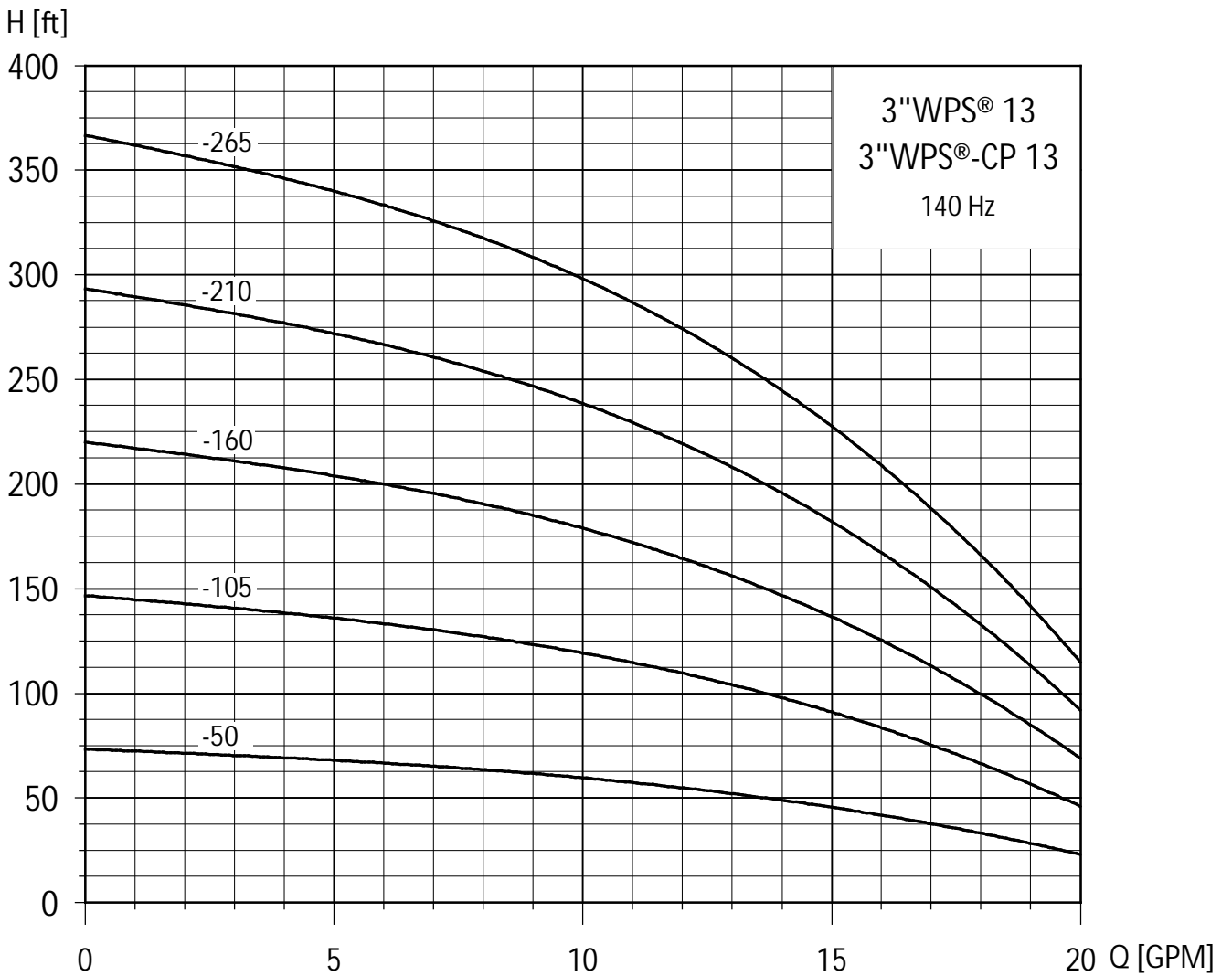
Performance Curves 3"WPS®-CP 8, 3"WPS® 8



Selection Chart 3"WPS® 8, 3"WPS®-CP 8

PUMP MODEL	Depth to water level (Lift) in Feet / Ratings in GPM (Gallons per Minute)																													
	HP	PSI	20	40	60	80	100	120	140	160	180	200	220	240	260	280	300	320	340	360	380	400	420	440	460	480				
3"WPS®-CP 3"WPS® 8-45 1 stage	0			8,4																										
	20	1,2																												
	30																													
	40																													
	50																													
	60																													
3"WPS®-CP 3"WPS® 8-90 2 Stage	0				11,8	9,0	6,1																							
	20	11,0	8,0	5,3																										
	30	7,6	4,3																											
	40																													
	50																													
	60																													
3"WPS®-CP 3"WPS® 8-130 3 stage	0					12,2	10,4	8,8	7,0	5,0	2,0																			
	20		12,0	10,0	8,3	6,5	4,5	1,1																						
	30	10,2	9,9	8,1	6,0	3,6																								
	40	9,7	7,9	6,0	3,5																									
	50	7,9	5,9	2,7																										
	60	5,2	2,5																											
3"WPS®-CP 3"WPS® 8-175 4 stage	0						9,4	10,1	9,0	7,7	6,1	4,0																		
	20			12,2	11,0	9,9	8,6	7,0	5,7	3,7																				
	30		12,1	10,9	9,7	8,3	6,9	5,6	3,5																					
	40	12,0	10,7	9,4	8,1	6,8	5,2	3,2																						
	50	10,6	9,2	7,9	6,5	5,1	2,7																							
	60	9,1	7,9	6,3	5,0	2,5																								
3"WPS®-CP 8-220 5 stage	0							12,0	11,0	9,9	8,8	7,8	6,7	5,5	3,9															
	20				12,3	11,6	10,8	9,7	8,5	7,4	6,3	5,4	3,5																	
	30			12,2	11,4	10,3	9,3	8,3	7,4	6,1	4,8	2,8																		
	40		12,2	11,3	10,2	9,3	8,2	7,3	6,1	4,6	2,5																			
	50	12,1	11,2	10,1	9,1	8,1	7,1	6,0	4,3	2,3																				
	60	11,1	10,1	9,0	8,1	7,0	5,8	4,2	2,1																					
3"WPS®-CP 3"WPS® 8-260 6 stage	0								12,2	11,5	10,5	9,8	8,9	8,0	7,0	6,0	5,0	3,3	1,8											
	20							12,2	11,1	10,2	9,5	8,6	7,9	6,9	5,8	4,4	2,9													
	30						11,9	11,0	10,1	9,4	8,6	7,8	6,7	5,7	4,3	2,8														
	40				11,9	10,9	10,0	9,2	8,4	7,6	6,5	5,6	4,1	2,6																
	50			11,8	10,8	9,9	9,1	8,3	7,4	6,3	5,4	4,0	2,5																	
	60		11,7	10,6	9,8	9,0	8,1	7,2	6,1	5,2	3,9	2,4																		
3"WPS®-CP 3"WPS® 8-305 7 stage	0									12,7	11,9	11,0	10,3	9,6	8,9	8,2	7,3	6,5	5,6	4,8	3,4									
	20							12,4	11,6	10,9	10,1	9,3	8,6	8,0	7,2	6,2	5,4	4,3	2,9											
	30						12,1	11,4	10,7	10,0	9,2	8,2	7,9	6,9	6,1	5,1	3,9	2,7												
	40				12,1	11,3	10,5	9,9	9,2	8,3	7,9	6,9	6,1	5,0	4,0	2,8														
	50			12,1	11,2	10,4	9,8	9,1	8,2	7,8	6,8	5,9	4,9	3,7	2,3															
	60		12,0	11,0	10,2	9,6	8,9	8,1	7,6	6,6	5,7	4,8	3,5	2,1																
3"WPS®-CP 3"WPS® 8-360 8 stage	0										12,1	11,4	10,7	10,1	9,5	8,8	8,0	7,5	6,9	6,0	5,0	4,0	3,0	2,0						
	20									12,0	11,2	10,5	9,8	9,2	8,6	8,0	7,4	6,8	5,8	4,9	3,9	2,9								
	30							11,9	11,1	10,4	9,8	9,1	8,5	7,9	7,2	6,5	5,7	4,9	3,8	2,6										
	40						11,7	11,0	10,3	9,8	9,2	8,4	7,9	7,2	6,3	5,6	4,6	3,7	2,4											
	50					11,5	11,0	10,2	9,7	9,1	8,3	7,8	7,1	6,1	5,6	4,5	3,5	2,2												
	60				11,5	10,9	10,2	9,6	9,0	8,2	7,7	7,0	6,0	5,4	4,5	3,3	2,0													

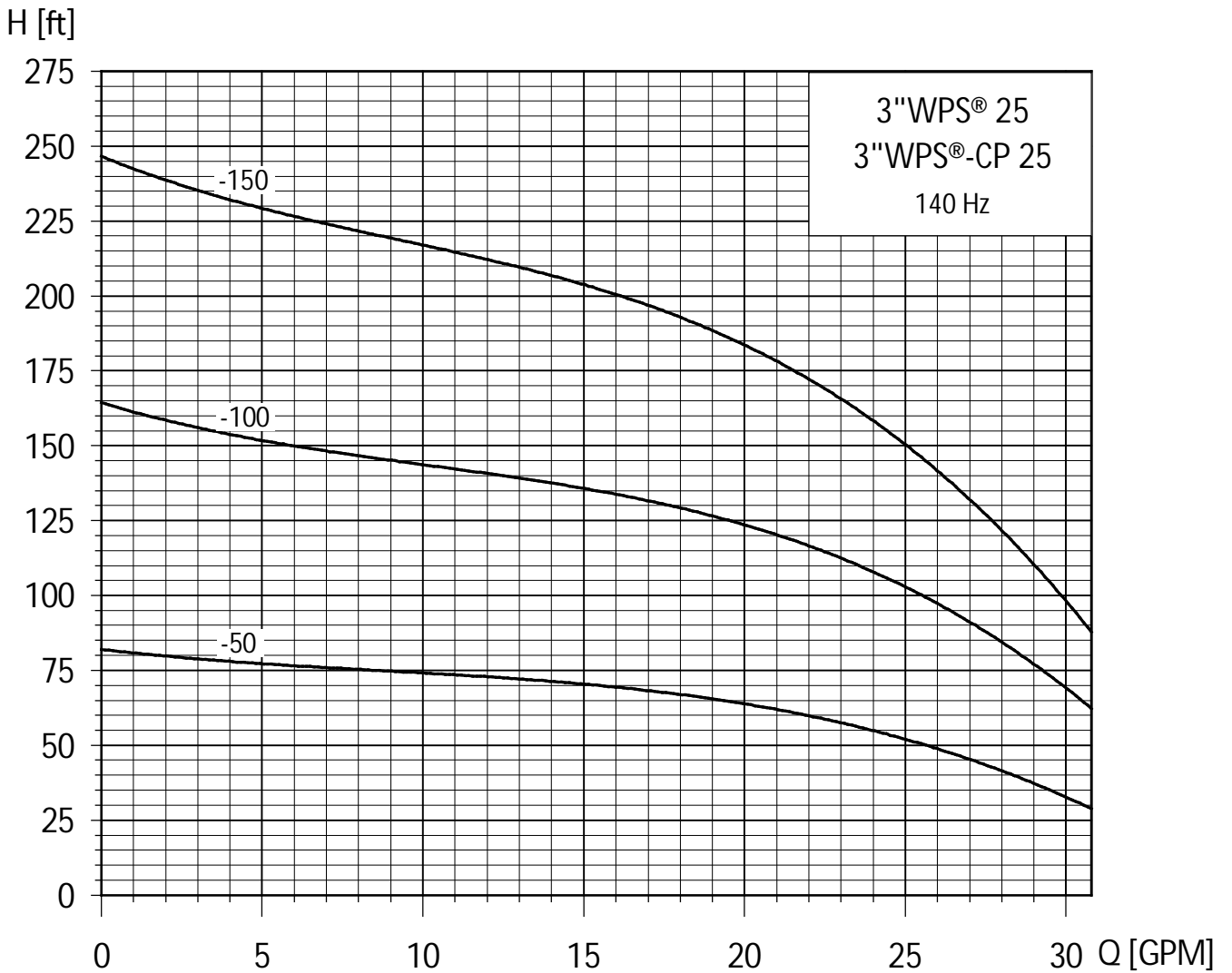
Performance Curves 3"WPS[®]-CP 13, 3"WPS[®] 13



Selection Chart 3"WPS® 13, 3"WPS®-CP 13

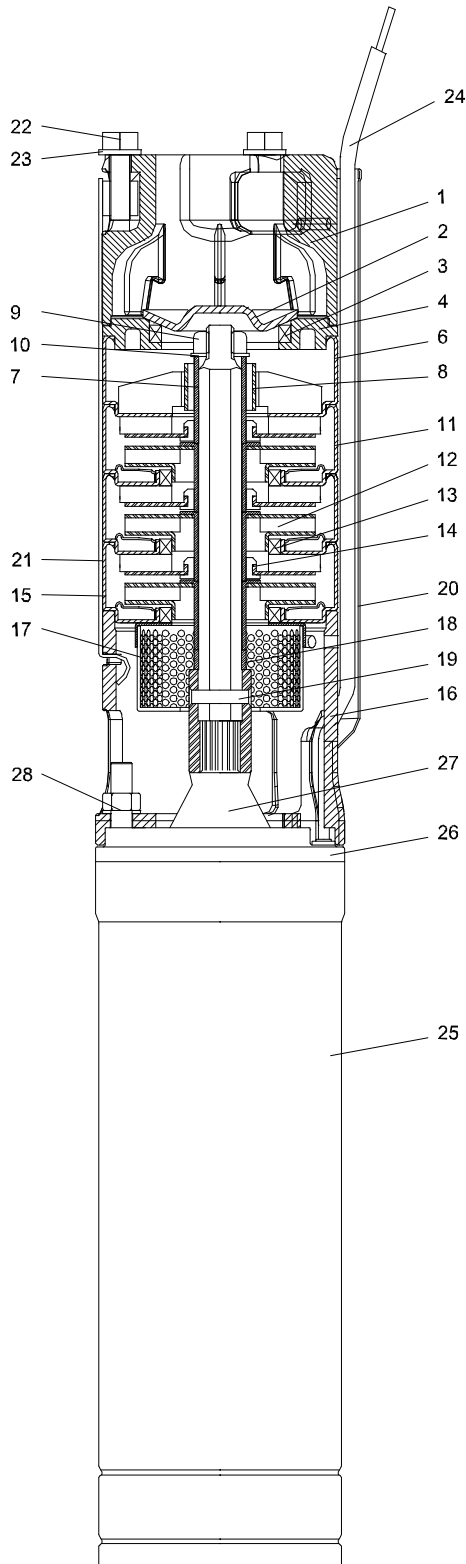
PUMP MODEL	Depth to water level (Lift) in Feet / Ratings in GPM (Gallons per Minute)																													
	HP	PSI	20	40	60	80	100	120	140	160	180	200	220	240	260	280	300	340	360	380	400	420	440	460	480	500	520			
3"WPS®-CP 3"WPS® 13-50 1 stage	0,8	0		16,4	9,9																									
		20	6,4																											
		30																												
		40																												
		50																												
		60																												
3"WPS®-CP 3"WPS®-CP 13-105 2 Stage	0,8	0			18,7	16,4	13,6	9,9	3,2																					
		20	18,4	15,7	12,5	8,4																								
		30	15,3	12,1	7,4																									
		40																												
		50																												
		60																												
3"WPS®-CP 3"WPS® 13-160 3 stage	1,2	0				19,3	18,0	16,3	14,6	12,5	9,9	5,9																		
		20		19,0	17,0	15,9	14,0	11,8	9,0	4,4																				
		30	18,7	17,4	15,7	13,7	11,5	8,4	3,5																					
		40	17,1	15,4	13,4	11,1	7,7	2,2																						
		50	15,1	13,0	10,7	7,0	1,5																							
		60	13,0	10,7	7,0	1,5																								
3"WPS®-CP 3"WPS® 13-210 4 stage	2	0					19,7	18,7	17,7	16,4	15,1	13,6	11,9	9,9	7,0	3,2														
		20			19,4	18,4	17,3	16,0	14,6	12,4	11,3	9,2	6,0	1,7																
		30		19,2	18,2	17,1	15,9	14,4	12,9	11,1	8,8	5,5	1,0																	
		40	19,1	18,1	16,9	15,7	14,2	12,7	10,8	8,4	5,0	0,4																		
		50	17,9	16,8	15,9	14,0	12,0	10,1	7,9	4,4																				
		60	16,8	15,8	14,0	12,0	10,1	7,9	4,4																					
3"WPS®-CP 3"WPS® 13-265 5 stage	2	0						19,1	18,3	17,5	16,4	15,4	14,2	12,9	11,6	9,9	7,7	5,1	1,2											
		20			19,6	18,8	18,1	17,2	16,1	15,8	13,8	12,5	11,2	9,4	6,9	4,1														
		30		19,5	18,7	17,9	17,0	16,0	14,9	13,6	12,3	11,0	9,1	6,5	3,4															
		40	19,4	18,6	17,8	16,9	15,8	14,7	13,4	12,1	10,7	8,8	6,1	2,7																
		50	19,3	18,5	17,7	16,7	15,1	14,5	13,8	11,9	10,4	8,4	5,7	2,1																
		60	18,5	17,7	16,7	15,1	14,5	13,8	11,9	10,4	8,4	5,7	2,1																	

Performance Curves 3"WPS®-CP 25, 3"WPS®-CP 25



Selection Chart 3"WPS® 25, 3"WPS®-CP 25

PUMP MODEL	HP	Depth to water level (Lift) in Feet / Ratings in GPM (Gallons per Minute)																														
		PSI	20	40	60	80	100	120	140	160	180	200	220	240	260	280	300	320	340	360	380	400	420	440	460	480	500	520	540			
3"WPS®-CP 3"WPS® 25-40 1 stage	0.8	0	32,0	26,0	16,0																											
		20	11,0																													
		30																														
		40																														
		50																														
		60																														
3"WPS®-CP 3"WPS® 25-80 2 Stage	1.2	0		32,0	28,5	25,5	22,0	15,5	4,0																							
		20	27,5	24,5	20,0	13,5	7,0																									
		30	24,0	19,5	12,0	4,0																										
		40	21,0	14,0																												
		50	8,0																													
		60																														
3"WPS®-CP 3"WPS® 25-120 3 stage	2	0		32,5	31,0	29,5	27,5	25,5	23,0	20,0	16,0	8,0																				
		20	30,5	28,5	27,0	25,0	22,0	18,5	14,0	5,5																						
		30	28,5	27,0	24,5	22,0	18,0	13,0	4,5																							
		40	26,5	24,0	21,5	17,5	12,5																									
		50	23,5	21,0	17,0	11,5																										
		60	20,5	16,5	9,5																											

Material specification


Pos.	Component	Material	Material code
1	Discharge Chamber	Stainless Steel	AISI 304 - 1.4301
2	Valve Cone	Stainless Steel	AISI 304 - 1.4301
3	Valve Seat	Stainless Steel/NBR	AISI 316 - 1.4401
4	Retainer for Valve Seat	Stainless Steel	AISI 304 - 1.4301
6	Top Diffusor	Stainless Steel	AISI 304 - 1.4301
7	Top Spacer	Stainless Steel	AISI 304 - 1.4301
8	Top Bearing	Stainless Steel/NBR	AISI 316 - 1.4401
9	Nut M8	Stainless Steel	AISI 304 - 1.4301
10	Washer M8	Stainless Steel	AISI 304 - 1.4301
11	Diffusor	Stainless Steel	AISI 304 - 1.4301
12	Impeller	Stainless Steel	AISI 304 - 1.4301
13	Neck Ring	Stainless Steel/NBR	AISI 304 - 1.4301
14	Intermediate Bearing	NBR rubber	NBR
15	Bottom Diffusor	Stainless Steel	AISI 304 - 1.4301
16	Suction interconnector	Stainless Steel	AISI 304 - 1.4301
17	Strainer	Stainless Steel	AISI 304 - 1.4301
18	First Spacer	Stainless Steel	AISI 304 - 1.4301
19	Shaft with coupling	Stainless Steel	AISI 304 - 1.4301
20	Cable Guard	Stainless Steel	AISI 304 - 1.4301
21	Strap	Stainless Steel	AISI 304 - 1.4301
22	Bolt M6	Stainless Steel	AISI 304 - 1.4301
23	Washer M6	Stainless Steel	AISI 304 - 1.4301
24	Motor Lead with plug	Stainless Steel	AISI 304 - 1.4301
25	Motor Stator	Stainless Steel	AISI 304 - 1.4301
26	Motor Top Cover	Stainless Steel	AISI 304 - 1.4301
27	Shaft Seal	NBR rubber	NBR
28	Nut and Washer M6	Stainless Steel	AISI 304 - 1.4301

Cable selection

3"WPS®-CP

Submersible drop cable to the motor

The table below shows the maximum length of the submersible drop cable between the controller and the motor for the different cable sizes and motor powers.

The cross-sections of the cable are calculated according to a 3% voltage drop (IEC 60364:2001).

The pump will cut out if the supply voltage falls below 185 V.

Motor size	AWG 14	AWG 12	AWG 10	AWG 8	AWG 6
0.8HP	400 ft	650 ft*	1000 ft*	1550 ft*	2500 ft*
1.2HP	300 ft	480 ft*	750 ft*	1150 ft*	1800 ft*
2HP	200 ft	300 ft	490 ft*	760 ft*	1200 ft*

*extra filter required

In case the total length of the electrical power cable between controller and motor exceeds 400 ft (120 m), an extra filter to protect the motor from burning is required.

Description	Max. Cable length	Reference
WPS® 200MF Filter	650 ft/200 m	001007
WPS® 400MF Filter	1300 ft/400 m	001008

Supply cable to the controller

In case you want a longer electrical cable, you must check the cable section following the table below. Maximal cable length for specific cable sections:

Motor Power	AWG 14	AWG 12	AWG 10	AWG 8
0.8 HP	115 ft	180 ft	325 ft	520 ft
1.2 HP	80 ft	130 ft	230 ft	375 ft
2 HP	50 ft	80 ft	130 ft	260 ft

3"WPS®

Submersible drop cable to the motor

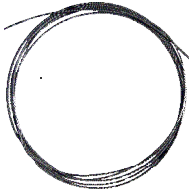
The table below shows the maximum length of the submersible drop cable between the supply and the motor for the different cable sizes and motor powers.

The cross-sections of the cable are calculated according to a 3% voltage drop (IEC 60364:2001). The pump will cut out if the supply voltage falls below 160 V.

Motor size	AWG 14	AWG 12	AWG 10	AWG 8
0.8 HP	160 ft	250 ft	450 ft	725 ft
1.2 HP	115 ft	180 ft	325 ft	525 ft
2 HP	70 ft	115 ft	180 ft	365 ft

Accessories

Straining Wire



The stainless steel wire retains the submersible pump. Special openings are made in the discharge chamber to fix the wire to the pump. When ordering please state the requested length [ft or m].

Material	Diameter	Reference
Stainless steel DIN W.-Nr. 1.4401, AISI 316	Ø 3mm	001098

Wire clamps



Two units are needed per loop. This means per installation 4 wire clamps are recommended.

Material	Diameter	Reference
Stainless steel DIN W.-Nr. 1.4401, AISI 316	Ø 3mm	001099

Filters



1. Motor side (only for 3" WPS®-CP): When the drop cable between the controller and the pump exceeds more than 400 ft (120m), an extra filter to protect the motor from burning is required.

Description	Max. Cable length	Reference
WPS® 200MF Filter	650 ft/200 m	001007
WPS® 400MF Filter	1300 ft/400 m	001008

2. Supply side (for both 3" WPS®-CP and 3" WPS® pumps) : Radio frequency interference is the radiation or conduction of radio frequency energy (or electronic noise) produced by electrical and electronic devices at levels that interfere with the operation of adjacent equipment. In case you experience phenomena, please install the WPS® RFI Power Line Filter.

Description	Reference
WPS® RFI Power Line Filter	001009

Cooling Shrouds

The cooling shrouds are designed to ensure a sufficient flow velocity past the motor in order to provide sufficient cooling. For the following cases a cooling shroud is recommended:

- horizontal or vertical installation in a tank
- installation of the pump in the screen from the well
- installation in big sized well not ensuring enough cooling velocity. See table.

Minimum flow required for motor cooling in water up to 86°F.	
Casing or sleeve I.D. [mm (inches)]	3" motor, cooling flow 8 cm/sec [GPM]
78 (3")	0.9
102 (4")	5
127 (5")	11
152 (6")	18

To the shroud itself, a screen can be added. In case of horizontal installation a set of supports are available. The screen can be changed by an adaptor with floating screen ensuring water intake about 7.8 inch (20cm) under the water level and prevent clogging of the pump due to sand or other sediments on the bottom of the tank, lake, ...

3"WPS®-CP

Description	Material	Pump with motor	Reference
Shroud Ø88x350mm	1.4301 AISI304	0.8HP/600W	001104
Shroud Ø88x450mm	1.4301 AISI304	1.2HP/900W – 2HP/1500W	001105

3"WPS®

Description	Material	Pump with motor	Reference
Shroud Ø88x900mm	1.4301 AISI304	All types	001110

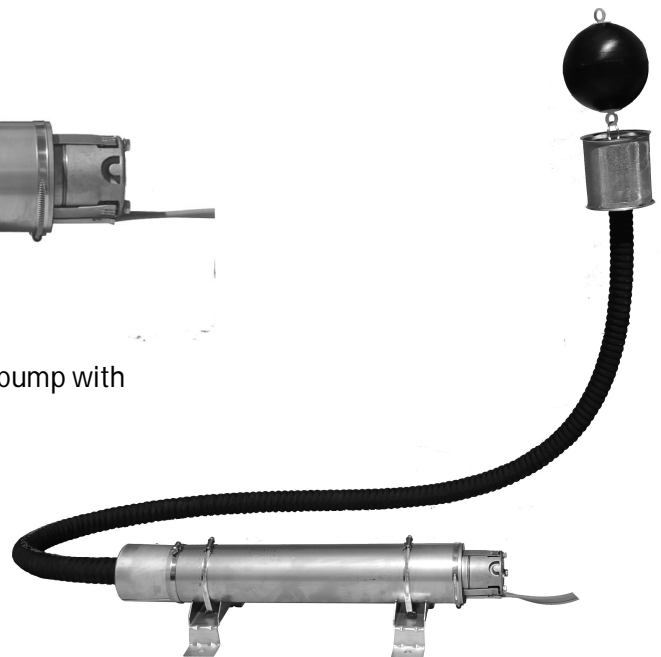
3"WPS®-CP and 3"WPS®

Description	Material	Pump with motor	Reference
Screen Ø88x90mm	1.4301 AISI304	All types	001106
Floating Screen	1.4301 AISI304	All types	001107

Description	Material	Reference
Set of supports for horizontal installation	1.4301 AISI 304	001108



Complete horizontal installation of 3"WPS®-CP pump with shroud, screen and set of supports



Complete horizontal installation of 3"WPS®-CP pump with floating screen



WELL PUMPS S.A.
Z.I. de Fleurus
Avenue de Lambusart 18
B-6220 Fleurus
Belgium

Tel : + 32 71 46.07.83
Fax : + 32 71 46.07.71
e-mail : info@wellpumps.be
site : www.wellpumps.be
